

# FSS





**Double Parabolic Bright Louvre (DP1):**  
The reflectors are made of (99.9%) pure anodised aluminum as double parabolic.



**Double Parabolic Matt Louvre (DP2):**  
The reflectors are made of (99.9%) pure matt anodised aluminum as double parabolic.



**Single Parabolic Bright Aluminum Louvre (SP1):**  
Manufactured of (99.9%) pure bright aluminum.



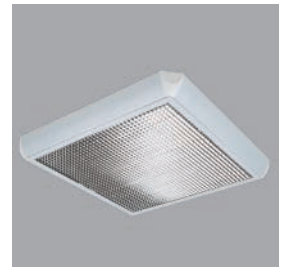
**Single Parabolic Matt Aluminum Louvre (SP2):**  
Manufactured of (99.9%) pure matt aluminum.



**Prismatic Lens (P1):**  
2.5 mm thick imported prismatic acrylic diffuser. The diffusers are manufactured of acrylic and do not change the color by the time. In case of a fire, acrylic diffusers do not increase flammability.



**Opal Lens (OP):**  
2.8 mm thick opal acrylic diffuser. The diffusers are manufactured of acrylic and do not change the color by the time. In case of a fire, acrylic diffusers do not increase flammability.



**Mesh Louvre (AL):**  
Imported specially shaped metallic louvre.

## Surface

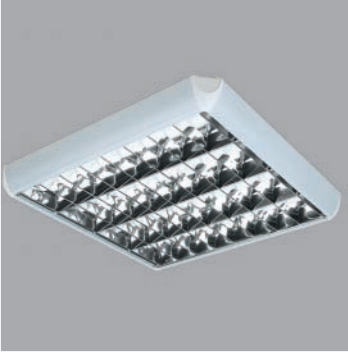
## Mounted Fixtures

FSS Series fixtures offer elegance and functionality together with their absolute design. They offer excellent visual comfort without any glare by their eligibility to interiors. They have metal clip system and hanger system to hold reflector that gives easy montage and maintenance chance.

## SURFACE MOUNTED FIXTURES / FSS



## FSS/418 DP1



## Description

**Double Parabolic Bright Louvre (DP1):** The reflectors are made of (99.9%) pure anodised aluminum as double parabolic.

## Code

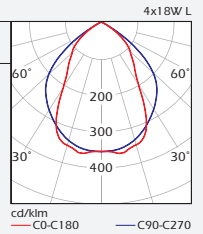
FSS/418 DP1

## Lamp

4x18W L

## Color

White/Gray



## Box Dimensions

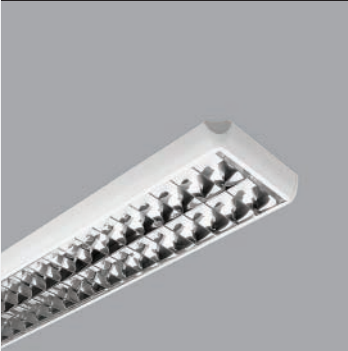
Inside box 1 PCS  
FSS/418 DP1 700x680x90 mm

## Weight

FSS/418DP1 5.900 gr

Protection: IP20

## FSS/2x DP1



## Description

**Double Parabolic Bright Louvre (DP1):** The reflectors are made of (99.9%) pure anodised aluminum as double parabolic.

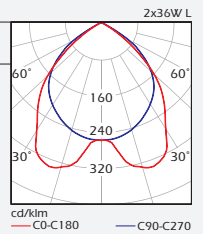
## Code

FSS/218 DP1  
FSS/236 DP1

## Lamp

2x18W L  
2x36W L

## Color

White/Gray  
White/Gray

## Box Dimensions

Inside box 1 PCS  
FSS/218 DP1 380x700x90 mm  
FSS/236 DP1 390x1285x90 mm

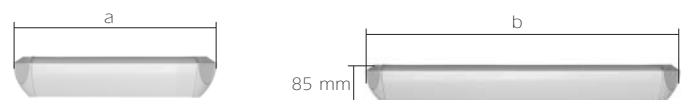
## Weight

FSS/218 DP1 3.600 gr  
FSS/236 DP1 7.000 gr

Protection: IP20

**Fixture Housing:** The fixture housings are made of 0.6 mm thick high quality steel sheet and painted with minimum 80 micron thick electrostatic powder paint. The lamp sockets have phosphorus-bronze contacts and wide rotor surfaces. The sockets have a locking mechanism and are resistant to temperatures up to 150°C Low energy-loss magnetic or electronic ballasts are used. The fixtures can be fitted with different diffusers and reflectors to meet different mechanical requirements and also to achieve different lighting effects.

## Dimensions:



Code	a	b	c
FSS/218 DP1	368 mm	663 mm	85 mm
FSS/236 DP1	368 mm	1264 mm	85 mm
FSS/418 DP1	660 mm	663 mm	85 mm





**Description**

**Double Parabolic Matt Louvre (DP2):**  
The reflectors are made of (99.9%) pure matt anodised aluminum as double parabolic.

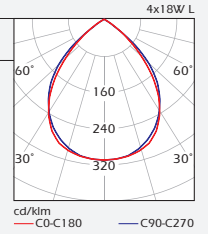
Code	Lamp	Color
FSS/418 DP2	4x18W L	White/Gray

Box Dimensions	Weight
Inside box 1 PCS FSS/418 DP2 700x680x90 mm	FSS/418DP2 5.900 gr

**Protection: IP20**



**Description**

**Double Parabolic Matt Louvre (DP2):**  
The reflectors are made of (99.9%) pure matt anodised aluminum as double parabolic.

Code	Lamp	Color
FSS/218 DP2	2x18W L	White/Gray
FSS/236 DP2	2x36W L	White/Gray

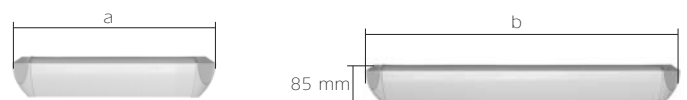
Box Dimensions	Weight
Inside box 1 PCS FSS/218 DP2 380x700x90 mm FSS/236 DP2 390x1285x90 mm	FSS/218 DP2 3.600 gr FSS/236 DP2 7.000 gr

**Protection: IP20**

**Fixture Housing:** The fixture housings are made of 0.6 mm thick high quality steel sheet and painted with minimum 80 micron thick electrostatic powder paint. The lamp sockets have phosphorus-bronze contacts and wide rotor surfaces. The sockets have a locking mechanism and are resistant to temperatures up to 150°C Low energy-loss magnetic or electronic ballasts are used. The fixtures can be fitted with different diffusers and reflectors to meet different mechanical requirements and also to achieve different lighting effects.

**Dimensions:**



Code	a	b	c
FSS/218 DP2	368 mm	663 mm	85 mm
FSS/236 DP2	368 mm	1264 mm	85 mm
FSS/418 DP2	660 mm	663 mm	85 mm

## SURFACE MOUNTED FIXTURES / FSS



## FSS/418 SP1



## Description

**Single Parabolic Bright Aluminum Louvre (SP1):**  
Manufactured of (99.9%) pure bright aluminum.

## Code

FSS/418 SP1

## Lamp

4x18W L

## Color

White/Gray

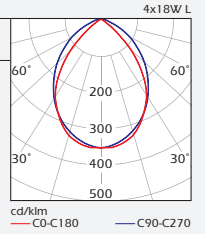
## Box Dimensions

Inside box 1 PCS  
FSS/418 SP1 700x680x90 mm

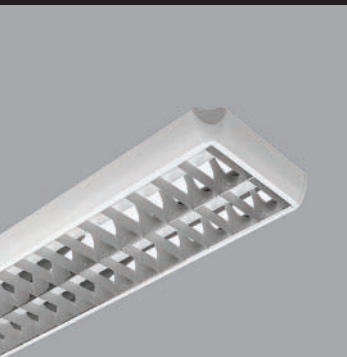
## Weight

FSS/418 SP1 5.900 gr

Protection: IP20



## FSS/2x SP1



## Description

**Single Parabolic Bright Aluminum Louvre (SP1):**  
Manufactured of (99.9%) pure bright aluminum.

## Code

FSS/218 SP1  
FSS/236 SP1

## Lamp

2x18W L  
2x36W L

## Color

White/Gray  
White/Gray

## Box Dimensions

Inside box 1 PCS  
FSS/218 SP1 380x 700x90 mm  
FSS/236 SP1 390x1285x90 mm

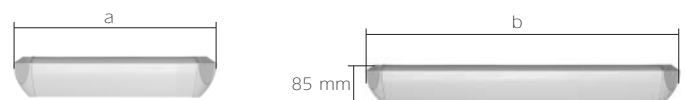
## Weight

FSS/218 SP1 3.600 gr  
FSS/236 SP1 7.000 gr

Protection: IP20

**Fixture Housing:** The fixture housings are made of 0.6 mm thick high quality steel sheet and painted with minimum 80 micron thick electrostatic powder paint. The lamp sockets have phosphorus-bronze contacts and wide rotor surfaces. The sockets have a locking mechanism and are resistant to temperatures up to 150°C Low energy-loss magnetic or electronic ballasts are used. The fixtures can be fitted with different diffusers and reflectors to meet different mechanical requirements and also to achieve different lighting effects.

## Dimensions:



Code	a	b	c
FSS/218 SP1	368 mm	663 mm	85 mm
FSS/236 SP1	368 mm	1264 mm	85 mm
FSS/418 SP1	660 mm	663 mm	85 mm



**FSS/418 SP2**

**Description**

**Single Parabolic Matt Aluminum Louvre (SP2):** Manufactured of (99.9%) pure matt aluminum.

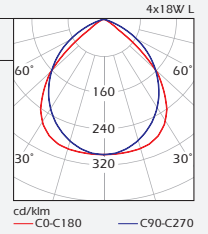
Code	Lamp	Color
FSS/418 SP2	4x18W L	White/Gray

Box Dimensions	Weight
Inside box 1 PCS FSS/418 SP2 700x680x90 mm	FSS/418 SP2 5.900 gr

**Protection: IP20**



**FSS/2x SP2**

**Description**

**Single Parabolic Matt Aluminum Louvre (SP2):** Manufactured of (99.9%) pure matt aluminum.

Code	Lamp	Color
FSS/218 SP2	2x18W L	White/Gray
FSS/236 SP2	2x36W L	White/Gray

Box Dimensions	Weight
Inside box 1 PCS FSS/218 SP2 380x700x90 mm FSS/236 SP2 390x1285x90 mm	FSS/218 SP2 3.600 gr FSS/236 SP2 7.000 gr

**Protection: IP20**

**Fixture Housing:** The fixture housings are made of 0.6 mm thick high quality steel sheet and painted with minimum 80 micron thick electrostatic powder paint. The lamp sockets have phosphorus-bronze contacts and wide rotor surfaces. The sockets have a locking mechanism and are resistant to temperatures up to 150°C Low energy-loss magnetic or electronic ballasts are used. The fixtures can be fitted with different diffusers and reflectors to meet different mechanical requirements and also to achieve different lighting effects.

**Dimensions:**



Code	a	b	c
FSS/218 SP2	368 mm	663 mm	85 mm
FSS/236 SP2	368 mm	1264 mm	85 mm
FSS/418 SP2	660 mm	663 mm	85 mm

## SURFACE MOUNTED FIXTURES / FSS



## FSS/418 P1



## Description

**Prismatic Lens (P1):**  
2.5mm thick prismatic acrylic diffuser. The diffusers are manufactured of acrylic. In case of a fire, acrylic diffusers do not increase flammability.

Code	Lamp	Color
FSS/418 P1	4x18W L	White

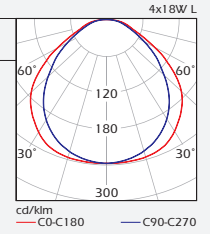
**Box Dimensions**

Inside box 1 PCS  
FSS/418 P1 700x680x90 mm

**Weight**

FSS/418 P1 6.400 gr

**Protection: IP20**  
**IP43** **Optional**



## FSS/2x P1



## Description

**Prismatic Lens (P1):**  
2.5mm thick prismatic acrylic diffuser. The diffusers are manufactured of acrylic. In case of a fire, acrylic diffusers do not increase flammability.

Code	Lamp	Color
FSS/218 P1	2x18W L	White
FSS/236 P1	2x36W L	White

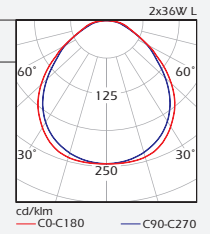
**Box Dimensions**

Inside box 1 PCS  
FSS/218 P1 380x 700x90 mm  
FSS/236 P1 390x1285x90 mm

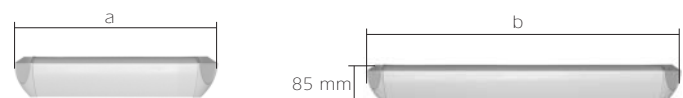
**Weight**

FSS/218 P1 3.900 gr  
FSS/236 P1 7.750 gr

**Protection: IP20**  
**IP43** **Optional**



**Fixture Housing:** The fixture housings are made of 0.6 mm thick high quality steel sheet and painted with minimum 80 micron thick electrostatic powder paint. The lamp sockets have phosphorus-bronze contacts and wide rotor surfaces. The sockets have a locking mechanism and are resistant to temperatures up to 150°C Low energy-loss magnetic or electronic ballasts are used. The fixtures can be fitted with different diffusers and reflectors to meet different mechanical requirements and also to achieve different lighting effects.

**Dimensions:**

Code	a	b	c
FSS/218 P1	368 mm	663 mm	85 mm
FSS/236 P1	368 mm	1264 mm	85 mm
FSS/418 P1	660 mm	663 mm	85 mm



**FSS/418 OP**

**Description**

**Opal Diffuser (OP):**  
The diffusers are manufactured of 2.8 mm thick acrylic. In case of a fire, acrylic diffusers do not increase flammability.

Code	Lamp	Color
FSS/418 OP	4x18W L	White

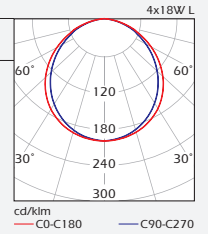
**Box Dimensions**

Inside box 1 PCS  
FSS/418 OP 700x680x90 mm

**Weight**

FSS/418 OP 6.800 gr

**Protection: IP20**  
**IP43** **Optional**



**FSS/2x OP**

**Description**

**Opal Diffuser (OP):**  
The diffusers are manufactured of 2.8 mm thick acrylic. In case of a fire, acrylic diffusers do not increase flammability.

Code	Lamp	Color
FSS/218 OP	2x18W L	White
FSS/236 OP	2x36W L	White

**Box Dimensions**

Inside box 1 PCS  
FSS/218 OP 380x 700x90 mm  
FSS/236 OP 390x1 285x90 mm

**Weight**

FSS/218 OP 4.300 gr  
FSS/236 OP 8.150 gr

**Protection: IP20**  
**IP43** **Optional**

**Fixture Housing:** The fixture housings are made of 0.6 mm thick high quality steel sheet and painted with minimum 80 micron thick electrostatic powder paint. The lamp sockets have phosphorus-bronze contacts and wide rotor surfaces. The sockets have a locking mechanism and are resistant to temperatures up to 150°C Low energy-loss magnetic or electronic ballasts are used. The fixtures can be fitted with different diffusers and reflectors to meet different mechanical requirements and also to achieve different lighting effects.

**Dimensions:**



Code	a	b	c
FSS/218 OP	368 mm	663 mm	85 mm
FSS/236 OP	368 mm	1264 mm	85 mm
FSS/418 OP	660 mm	663 mm	85 mm



## SURFACE MOUNTED FIXTURES / FSS



## FSS/418 AL



## Description

**Mesh Louvre (AL):**  
Specially shaped metallic louvre.

## Code

FSS/418 AL

## Lamp

4x18W L

## Color

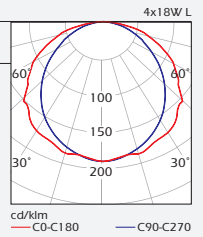
White

## Box Dimensions

Inside box 1 PCS  
FSS/418 AL 700x680x90 mm

## Weight

FSS/418 AL 6.800 gr

**Protection: IP20**

## FSS/2x AL



## Description

**Mesh Louvre (AL):**  
Specially shaped metallic louvre.

## Code

FSS/218 AL  
FSS/236 AL

## Lamp

2x18W L  
2x36W L

## Color

White  
White

## Box Dimensions

Inside box 1 PCS  
FSS/218 AL 380x700x90 mm  
FSS/236 AL 390x1285x90 mm

## Weight

FSS/218 AL 4.300 gr  
FSS/236 AL 8.150 gr

**Protection: IP20**

**Fixture Housing:** The fixture housings are made of 0.6 mm thick high quality steel sheet and painted with minimum 80 micron thick electrostatic powder paint. The lamp sockets have phosphorus-bronze contacts and wide rotor surfaces. The sockets have a locking mechanism and are resistant to temperatures up to 150°C Low energy-loss magnetic or electronic ballasts are used. The fixtures can be fitted with different diffusers and reflectors to meet different mechanical requirements and also to achieve different lighting effects.

## Dimensions:



Code	a	b	c
FSS/218 AL	368 mm	663 mm	85 mm
FSS/236 AL	368 mm	1264 mm	85 mm
FSS/418 AL	660 mm	663 mm	85 mm