

Canopus





Canopus

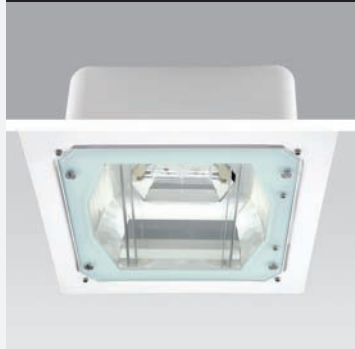
Fixtures

All petrol stations are going to be renewed with LITPA fixtures. You can use your free style more and more in your projects with Canopus model fixtures that has symmetrical - asymmetrical MIRO-HID aluminum reflectors and recessed/surface mounted types and the aluminum body combined with performance and design. With their reflector structures that has extremely high efficiency and eligibility to use with Metal Halide Lamps, Canopus fixtures offer a huge energy disposal in petrol station lighting applications.

CANOPY FIXTURES / CANOPUS (MAG)



MAG/S



Description

Body: High quality 2 mm thick aluminum, painted with min. 80 micron polyester powder paint. Inner frame is aluminum injection, outer frames is 2.5 mm thick aluminum.

Symmetrical Reflector: 0.4 mm thick special purposed silver mirror aluminum.

Glass: 5 mm thick tempered with serigraphy

| Code | Lamp | Color |
|-----------|---------------------|-------|
| MAG 150/S | 1x150W HQ/TS/HCI-TS | White |
| MAG 250/S | 1x250W HCI-TM | White |

Box Dimensions

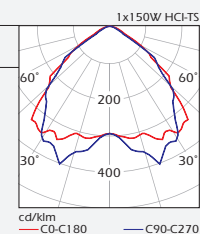
Inside box 1 PCS.
MAG 150/S 440x440x220 mm
MAG 250/S 440x440x220 mm

Cut-out: 360x360 mm

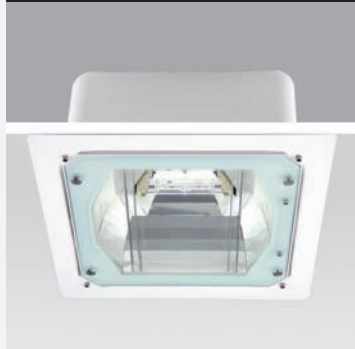
Weight

MAG 150/S 8.100 gr
MAG 250/S 9.400 gr

Protection: IP65



MAG/AS



Description

Body: High quality 2 mm thick aluminum, painted with min. 80 micron polyester powder paint. Inner frame is aluminum injection, outer frames is 2.5 mm thick aluminum.

Asymmetrical Reflector: 0.4 mm thick special purposed silver mirror aluminum.

Glass: 5 mm thick tempered with serigraphy

| Code | Lamp | Color |
|------------|---------------------|-------|
| MAG 150/AS | 1x150W HQ/TS/HCI-TS | White |
| MAG 250/AS | 1x250W HCI-TM | White |

Box Dimensions

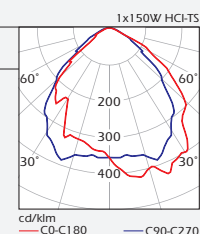
Inside box 1 PCS.
MAG 150/AS 440x440x220 mm
MAG 250/AS 440x440x220 mm

Cut-out: 360x360 mm

Weight

MAG 150/AS 8.100 gr
MAG 250/AS 9.400 gr

Protection: IP65



Dimensions

